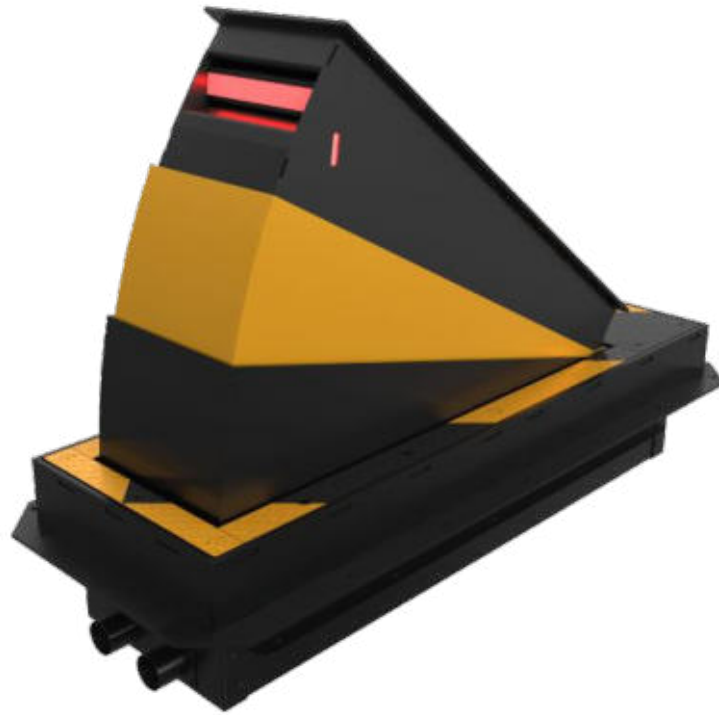


ROAD BLOCKERS

CITY-LIGHT CYCLOPES

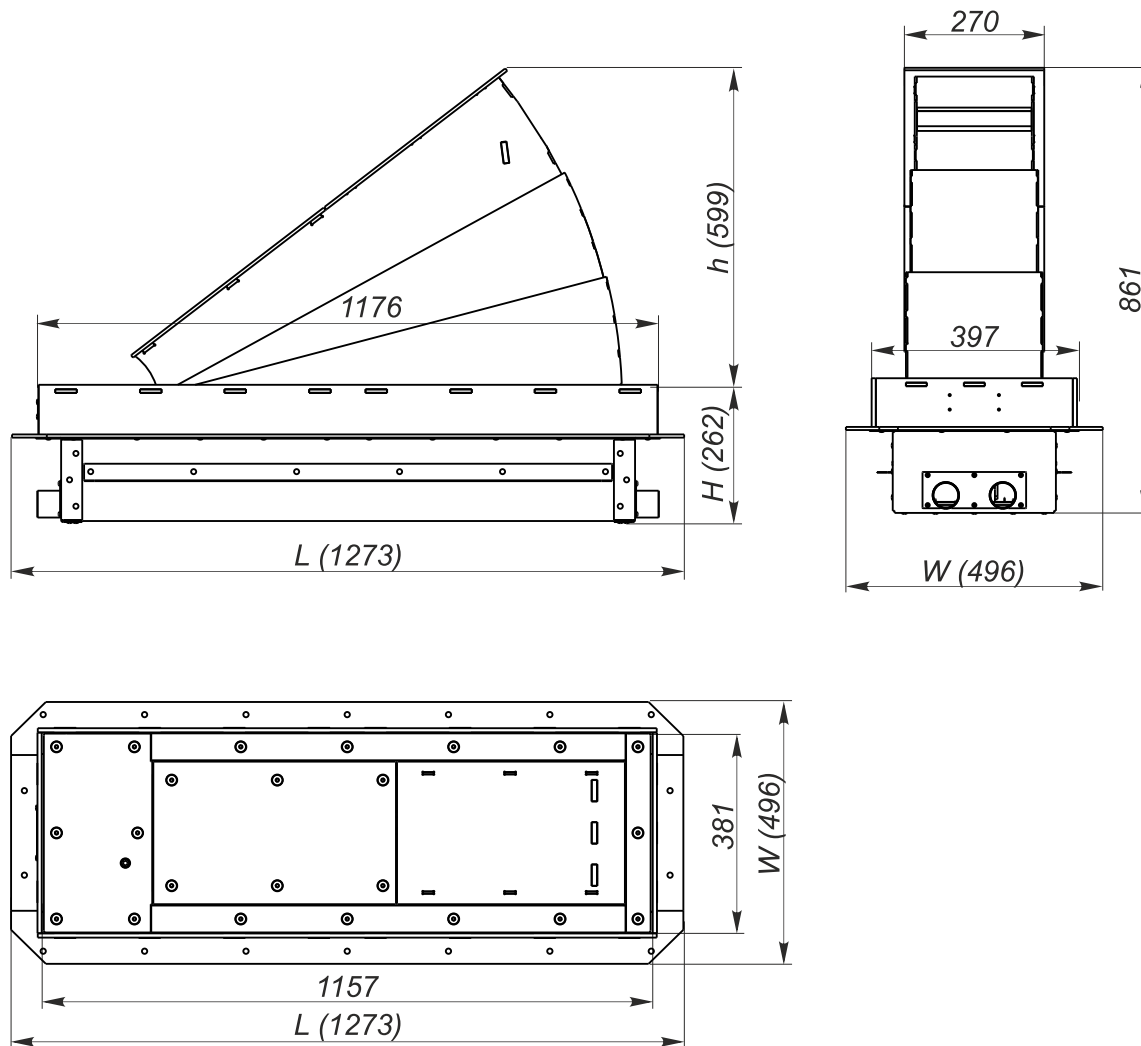


RELIABLE, PRACTICAL AND COST-EFFECTIVE SOLUTION TO
PROVIDE 100% SECURITY OF YOUR TERRITORY

City-light Cyclope designated for providing pedestrian friendly vehicle access control to protected perimeter. Comparing to bollards, TiSO Cyclope road blocker requires shallow mounting installation depth. This motorized platform has hydraulic drive and has been engineered to keep high intensity operation mode. Wide range of optional configurations enables it to be widely applicable security solution for variety of projects.

Installation areas

- Governmental Institutions
- Military Bases
- Nuclear Power Plants
- Production sites (Industrial Plants)
- Commercial areas
- Financial institutions
- Airport Premises
- Business (Office) Center
- Hotels
- Sport Complexes
- Recreation areas
- Urban areas
- Education Institutions



TECHNICAL SPECS:

Model	RB319-01-G-15-0.4/0.4-025/060-025
Model code	AUIA.319-01-A
Installation type	Submersible
Drive	Hydraulic
Dimensions (LxWxH), mm	1273x496x260
Blocking width, mm	270
Rising platform height, mm	600 (± 20)
Axle load, t	15
Rising time, sec	3.5 (± 1)
Lowering time, sec	2 (± 1)
Operating temperature*, °C	-40 / +40
Power supply	1 phase 230 V, 50/60 Hz
Protection level	IP 67 for Road blocker IP 55 for control box
Materials	Structural steel C22 / Stainless steel

*for temperatures lower than -10 °C use the heating device, for temperatures higher than +40 °C use the cooler device

Due to regular improvement of the product its design can be modified without degradation of the product features and quality not covered by this datasheet.